

Additional tables and charts for UK strategy

Table 1: Estimated monetary adjustments to agricultural accounts

(£million 2003, central estimates)

Impact category	Accounting adjustment		UK
Adjustments for Welfare Impacts on Society:			
I. Water	Water pollution arising from agricultural production	Inland	-£71
		Coastal	-£3
	Agricultural water abstraction		(E&W) -£36
II. Air	Air pollution arising from agricultural production	Global	-£889
		Regional/Local	-£67
III. Soil	Soil erosion on-farm on future yields		
IV. Landscape	Landscape amenity services by the current provision of landscape (within the agricultural sector)		£488
V. Habitats and Species	Habitat and species protection services provided by current land-use (within the agricultural sector)		£225 (Eng) £307
VI. Waste	Waste pollution and disamenity arising from agricultural production		-£15
Adjustments for Impacts on Other Sectors:			
I. Water	Cost of water pollution clean up costs	Gov't	-£2
		Water Company	-£181
	Costs of flooding		-£153
III. Soil	Cost of off-site soil erosion		-£9

Source: eftec report for Defra 2004

Chart 1: age profile of UK farm holders - 1993 to 2003

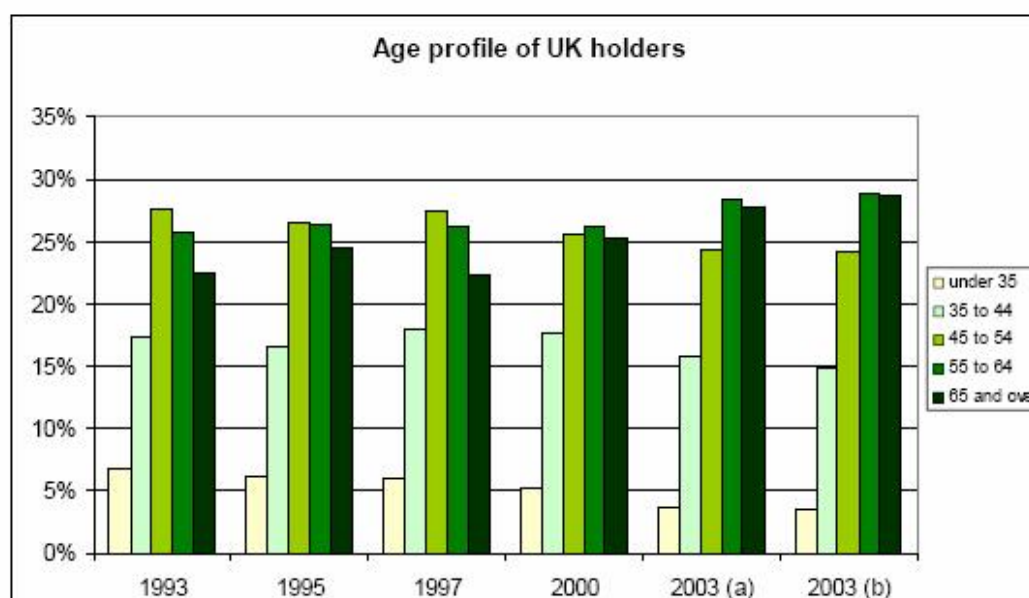


Chart 2: UK distribution of performance across farms > 0.5 SLR 2004/05

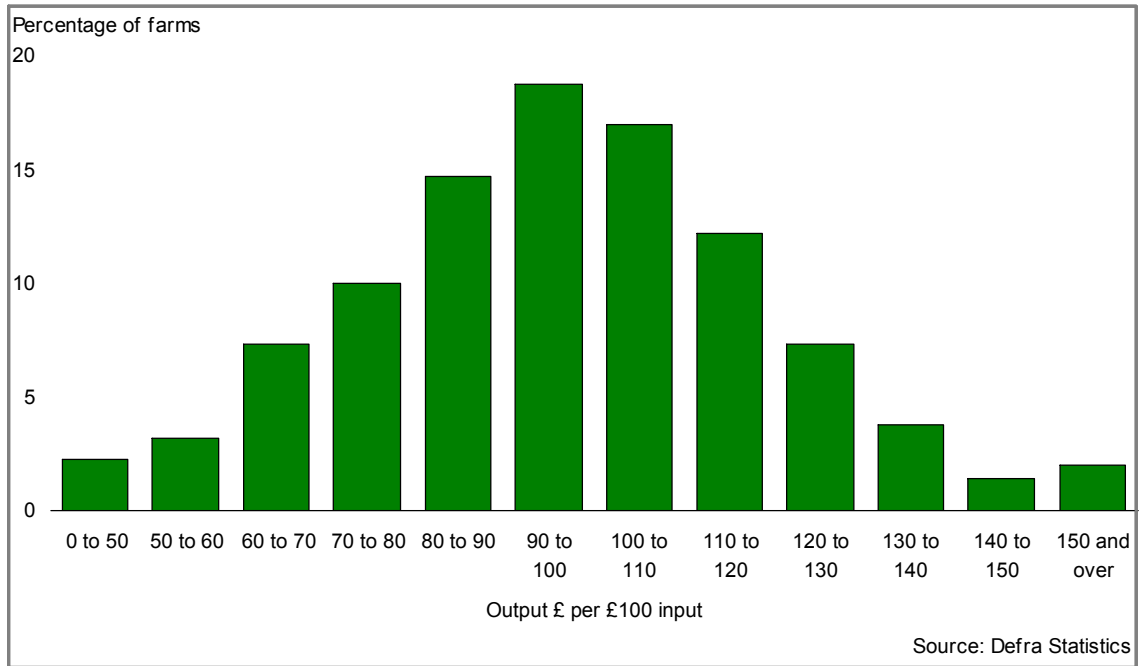


Chart 3: UK trade in food, feed and drink in real terms at 2004 prices

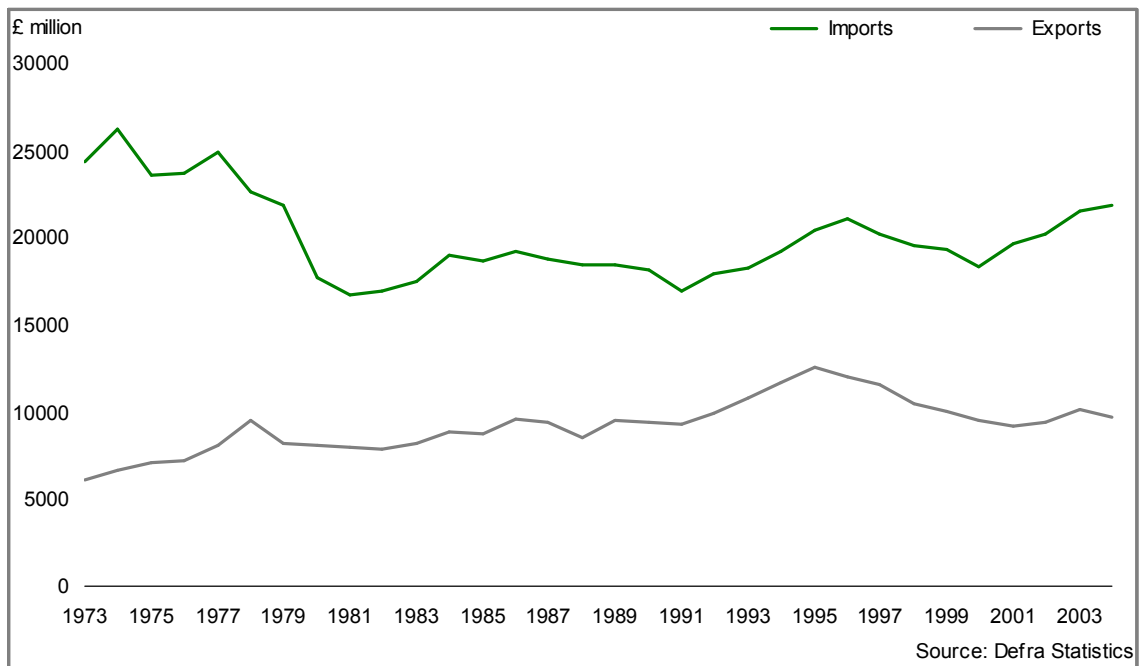
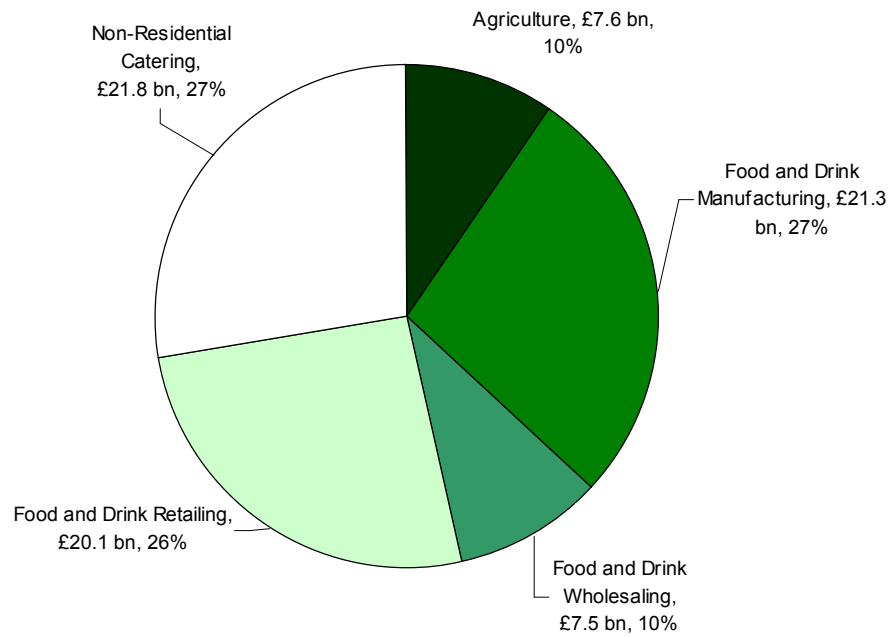


Chart 4: Gross value added by the UK agri-food sector in 2004



Source: Annual Business Inquiry (ONS) and AUK (Defra)

Chart 5: UK farmland bird index 1970 to 2004

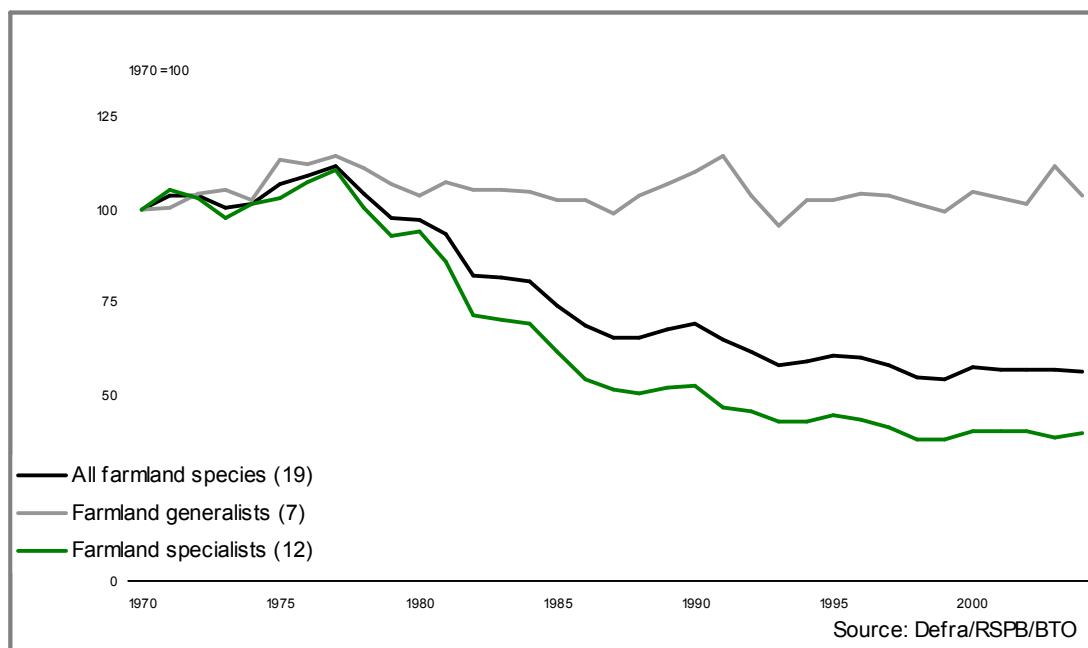


Chart 6: Estimated stock of linear features and number of lowland ponds in Great Britain – 1984 to 1998.

Figure 2.1: Update of the *Quality of Life Counts* indicator for landscape features (S5). Estimated stock ('000 km) of linear features and numbers of lowland ponds ('000) in 1984, 1990 and 1998 in Great Britain.

