

# Catchment 4a: Yare

All applications from farmers within the priority catchment are welcome. Applicants should note that funding is limited and, if the total amount of grant applied for by all applicants exceeds the available budget, grants will be allocated to those applications within target areas and which include high priority capital items.

This is to ensure that grants are awarded to only those applications which best meet the scheme's priorities e.g. that address water pollution issues within catchment target area(s) and will deliver the greatest environmental benefit. If the scheme is oversubscribed, additional criteria will also be considered.

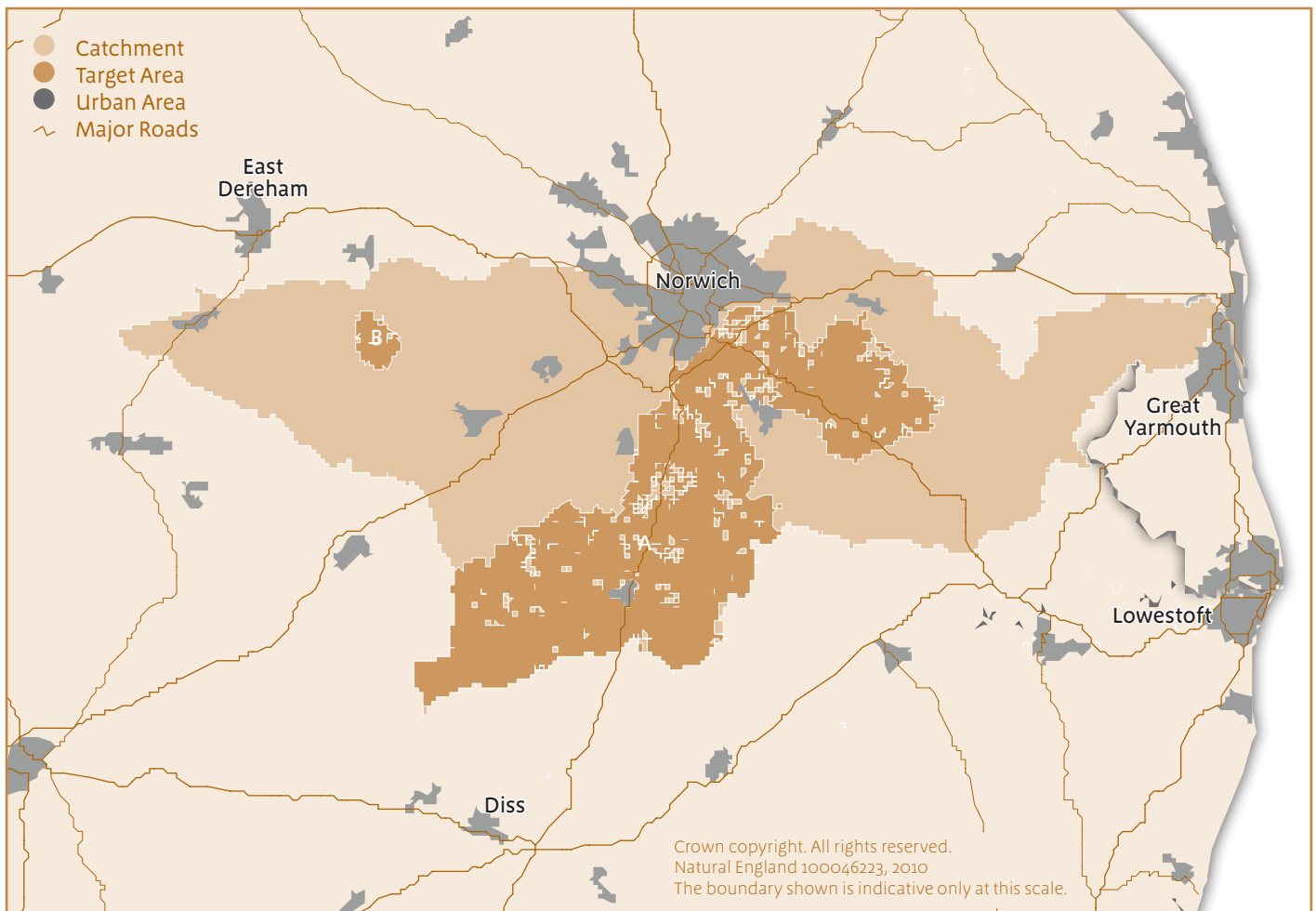
## Target Areas

**A** River Chet catchment and Upper Chet catchments (from Carleton Rode/Winfarthing/ North Green to Norwich to Langley Abbey)

**B** The area around Coston Fen

Please see indicative map for target area boundaries.

More detailed maps for individual catchments can be viewed on the MAGIC website via a link in the Capital Grant Scheme pages at [www.defra.gov.uk/foodfarm/landmanage/water/csf/grants/capital-grants-scheme.htm](http://www.defra.gov.uk/foodfarm/landmanage/water/csf/grants/capital-grants-scheme.htm) From the MAGIC website select the 'search option' tab then select the 'postcode' button and enter your postcode. This will load a map that will show if your land is in a priority catchment.



## Capital Items

In this catchment we are particularly interested in funding applications which aim to:

- reduce sediment, nutrient and pesticide run-off from agricultural holdings.

The following capital items will assist in delivering these aims and will be favoured in the grant application process:

Capital items in order of priority (Item code in brackets)

- Yard works for clean and dirty water separation (CSFo14)
- Pesticide sprayer loading and wash-down areas (CSFo27)
- Roofs for slurry and silage stores including floating covers for slurry stores (CSFo26)
- Roofing of manure storage and livestock gathering areas (CSFo23)
- Livestock and farm machinery tracks (CSFo21)
- Watercourse fencing (CSFo03)
- Sediment ponds and traps (CSFo12)
- Relocation of gates (CSFo01)

## Other Prioritisation Criteria

A number of additional criteria have been introduced to assist with the prioritisation of grant applications in 2010/11. In addition to target areas and capital item priority, consideration will be given to holdings and/or applicants:

- Which have not previously received a CSF capital grant or the CSF grant received in previous years was less than £2000 in total;
- With a current agreement under the Countryside Stewardship Scheme, Environmentally Sensitive Areas Scheme, Habitat Scheme, Environmental Stewardship (including Entry Level Scheme, Organic Entry Level Scheme, Higher Level Scheme and Organic Higher Level Scheme);
- Have already engaged with the ECSFDI initiative at any time prior to submission of application e.g. received a 1:1 site visit from a local Catchment Sensitive Farming Officer (CSFO) or CSF Contractor to discuss their application and/or discussed their application by telephone with their local CSFO or CSF Contractor and/or attended a CSF workshop and/or had a farm infrastructure audit carried out on their holding.

These additional criteria will allow some differentiation between applications to give more opportunity to farmers who have not had grants before or have received low value grants and those who are already actively making a contribution to the environment through participation in an agri-environment scheme.

## Further Information

For further information and advice, please contact your Catchment Sensitive Farming Officer:

**Nigel Simpson**

Mobile: 07920 750988

[nigel.simpson@naturalengland.org.uk](mailto:nigel.simpson@naturalengland.org.uk)



## A clear solution for farmers

ENGLAND CATCHMENT SENSITIVE FARMING DELIVERY INITIATIVE

The England Catchment Sensitive Farming Delivery Initiative (ECSFDI) is delivered in partnership by Natural England, the Environment Agency and Defra.

